



GOOD MORNING  
Have Good Trading Day

MONDAY



Price is what you pay.  
Value is what you get.

- Warren Buffet



## MARKET PULSE

### INDIAN INDICES

NAME	CMP	NET CH.	%
SENSEX	26265	-38	-0.15
NIFTY	7954	-1	-0.01

### INDIAN ADR'S

SYMBOL	CLOSE	GAIN/ LOSS %
DRREDDY	53.50	-18.01
HDFCBANK	59.23	-1.61
ICICIBK	8.19	-0.73
INFY	18.09	Unch
TATAMOTOR	30.13	Unch
WIPRO	12.18	+0.25

### FII AND MF ACTIVITY

SYMBOL	In Crs.
FIIs Eq (Provisional)	219.17
FIIs Index Future	-648.66
FIIs Index Options	-837.18
FIIs Stock Future	-435.40
FIIs Stock Options	-56.90
DII's Eq (Provisional)	-39.45

### CURRENCY

RBI RATE	06-NOV-2015
RUPEE - \$	65.7910
EURO	71.5477
YEN 100	54.0000
GBP	99.9497

## MARKET PULSE

### GLOBAL INDICES

NAME	CMP	NET CH.	%
DOW	17910	+46	+0.26
NASDAQ	5147	+19	+0.38
NIKKEI	19678	+412	+2.14
HANG SENG	22899	+31	+0.13
SGX NIFTY	7823	+152	+1.91

### WORLD COMMODITIES

FUTURE	U\$\$	CHANGES
CRUDE	44.65	+0.36
NATURAL GAS	2.375	+0.004
GOLD	1092.6	+4.9
SILVER	14.730	+0.039
COPPER	2.2485	+0.0065

### WORLD EVENTS

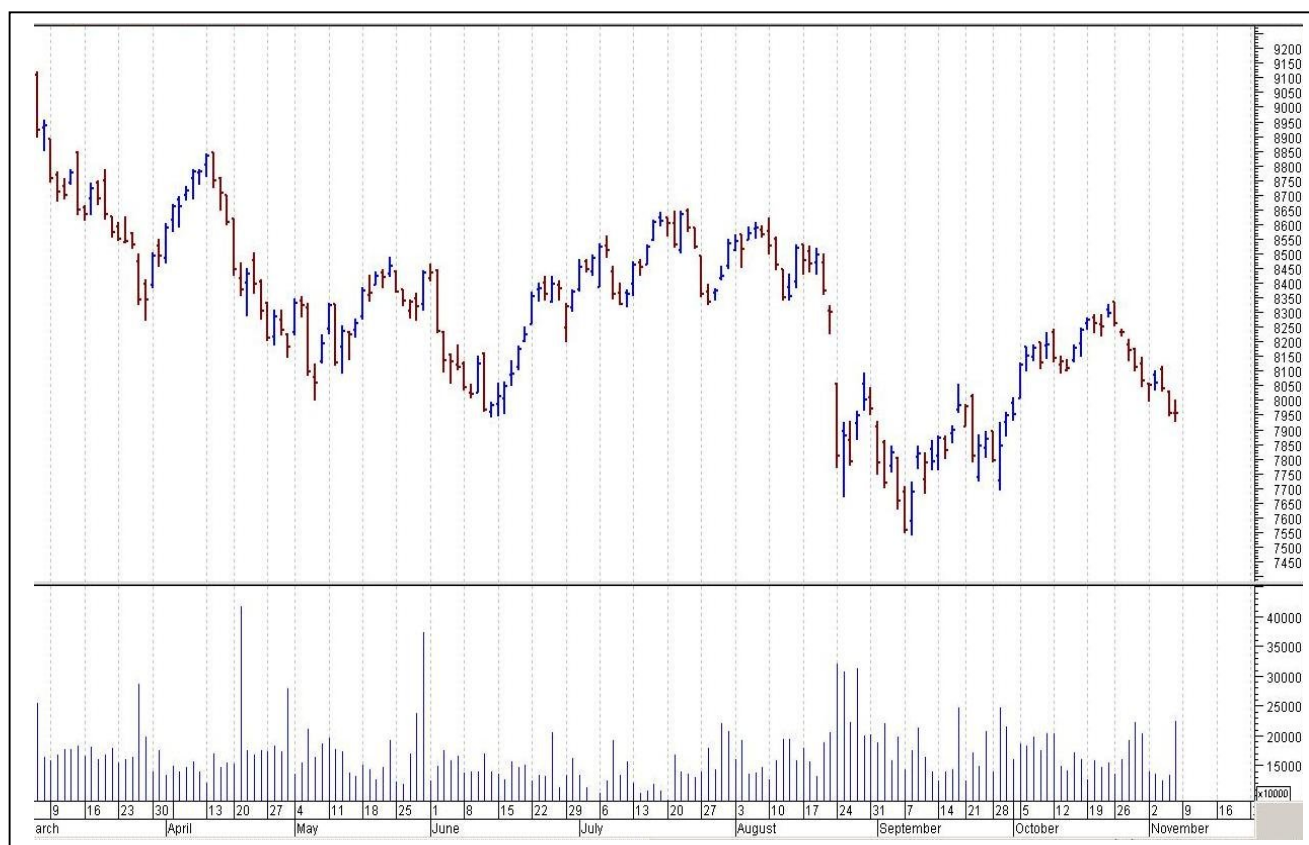
- US: Labor Market Conditions Index m/m
- UK:NIL

## TOP STORY

- Tata Motors Q2 Cons Net Loss At `430 Cr Vs Profit Of `3,291 Cr (YoY). Cons Total Income At `61,318 Cr Vs `60,641Cr (YoY)
- ONGC Q2 Net Profit At 4,842 Cr Vs `5,460 Cr (QoQ) Total Income At 20,679 Cr Vs `22,825 Cr (QoQ)
- RCom Q2 Cons Net Profit At 156 Cr Vs 177 Cr(QoQ) Cons Total Income At 5324 Cr Vs 5493 Cr(QoQ)
- Aurobindo Pharma Q2 Cons Net Profit At `451.8 Cr Vs `372.2 Cr (YoY) Cons Total Income At `3,333.5 Cr Vs `2,881.2 Cr (YoY)
- Govt Hikes Excise Duty On Petrol By `1.60/Litre, diesel by Rs. 0.40/litre w.e.f. Today
- Coal India to invest `6000 cr to set up solar power units (ET)
- Sun Pharma Q2 Cons Net Profit At `1,108.7 Cr Vs `479 Cr (QoQ) (Sun Pharma Had An Exceptional Loss Of `685.2 Cr In Q1FY16). Cons Net Sales Up 4.3% At `6,803.3 Cr Vs `6525.8 Cr (QoQ)
- Hathway Cable Board Approves Demerger Of ISP Business Into Hathway Broadband



## NIFTY CHART



## MARKET COMMENTARY

Indian equities drifted down in late afternoon session to trade at the lowest point of the day as investors turned cautious ahead of Bihar election verdict after exit polls showed a neck-to-neck fight between NDA and JDU-led grand alliance in Bihar. If the grand alliance of JDU-RJD-Congress gains an edge, market could see some temporary suffering. Sentiment remained subdued with RBI Governor Raghuram Rajan's statement that the central bank is comfortable with the current level of policy rates till more room builds up, even as the government expressed hope for further cuts. For today's trade Nifty likely to trade in the range between 7970 – 7985 in the upper side and 7930 – 7910 in the lower side.

### MARKET LEVELS

	CMP	SUPPORT LEVELS				RESISTANCE LEVELS			
NIFTY	7954	7930	7910	7880	7850	7970	7985	8030	8050
USDINR	66.01	65.95	65.85	65.8	65.65	66.05	66.15	66.35	66.45



### FUTURES CORNER

SCRIPS	CLOSE	SUPPORT	TARGET		REMARKS
		STOP LOSS	T1	T2	
BANKINDIA	134.5	132	135	138	TRADING CALL
TITAN	350.05	347	355	358	TRADING CALL
COALINDIA	342.2	340	346	348	TRADING CALL

### EQUITY CORNER

SCRIPS	CLOSE	SUPPORT	TARGET		REMARKS
		STOP LOSS	T1	T2	
PIPAPAVDOC	58.85	57	60.5	61.8	TRADING CALL
HITACHIHOME	1352.7	1341	1372	1388	TRADING CALL

### DELIVERY BASED CALL / INVESTMENT CALL

SCRIPS	CMP	SUPPORT	TARGET		REMARK
		STOP LOSS	T1	T2	

### BULK DEALS (BSE)

SCRIP	CLIENT NAME	BUY/SELL	QUANTITY	PRICE
ECLERX	GOLDMAN SACHS INDIA FUND LTD	B	173,779	1,760.05
EVEREADY	AMANSA HOLDINGS PRIVATE LTD	B	548,000	265

### BULK DEALS (NSE)

SCRIP	CLIENT NAME	BUY/SELL	QUANTITY	PRICE
EVEREADY	AMANSA HOLDINGS PRIVATE LIMITED	BUY	452000	264.98
ALPA	SHILPA PORINJU VELIYATH	BUY	110000	31.3

### SCRIP'S IN F&O BAN

(To resume for normal trading below 80% of market wide limit required)

CEATLTD



NIFTY 50 STOCKS: SUPPORT & RESISTANCE						
Symbol	Close	Support 1	Support 2	Pivot Point	Resistance1	Resistance2
ACC	1384.05	1372.55	1361.05	1382.60	1394.10	1404.15
ADANIPORTS	285.05	281.60	278.15	284.75	288.20	291.35
AMBUJACEM	209.85	207.13	204.42	208.57	211.28	212.72
ASIANPAINT	801.20	795.47	789.73	805.73	811.47	821.73
AXISBANK	465.15	460.60	456.05	464.05	468.60	472.05
BAJAJ-AUTO	2429.45	2410.75	2392.05	2429.80	2448.50	2467.55
BANKBARODA	167.05	148.37	129.68	158.78	177.47	187.88
BHARTIARTL	339.20	323.48	307.77	332.82	348.53	357.87
BHEL	191.45	184.77	178.08	190.78	197.47	203.48
BOSCHLTD	19365.25	19030.47	18695.68	19607.78	19942.57	20519.88
BPCL	896.10	889.53	882.97	894.52	901.08	906.07
CAIRN	150.80	149.20	147.60	150.75	152.35	153.90
CIPLA	658.15	648.53	638.92	660.62	670.23	682.32
COALINDIA	342.20	335.13	328.07	340.07	347.13	352.07
DRREDDY	3630.65	3399.77	3168.88	3845.88	4076.77	4522.88
GAIL	288.15	283.68	279.22	289.82	294.28	300.42
GRASIM	3689.05	3658.53	3628.02	3688.72	3719.23	3749.42
HCLTECH	885.45	876.87	868.28	883.18	891.77	898.08
HDFC	1205.40	1196.93	1188.47	1210.72	1219.18	1232.97
HDFCBANK	1080.90	1074.43	1067.97	1081.72	1088.18	1095.47
HEROMOTOCO	2639.85	2601.67	2563.48	2638.28	2676.47	2713.08
HINDALCO	80.90	79.85	78.80	81.05	82.10	83.30
HINDUNILVR	799.05	794.58	790.12	800.77	805.23	811.42
ICICIBANK	267.10	264.60	262.10	267.25	269.75	272.40
IDEA	139.30	137.22	135.13	139.08	141.17	143.03
INDUSINDBK	920.95	911.70	902.45	917.85	927.10	933.25
INFY	1138.30	1126.17	1114.03	1135.03	1147.17	1156.03
ITC	337.70	335.32	332.93	337.38	339.77	341.83
KOTAKBANK	656.50	647.27	638.03	656.38	665.62	674.73
LT	1377.25	1370.73	1364.22	1378.62	1385.13	1393.02
LUPIN	1857.85	1823.27	1788.68	1846.63	1881.22	1904.58
M&M	1249.55	1218.70	1187.85	1243.85	1274.70	1299.85
MARUTI	4522.80	4490.78	4458.77	4513.07	4545.08	4567.37
NTPC	135.55	133.53	131.52	136.42	138.43	141.32
ONGC	251.45	247.43	243.42	252.02	256.03	260.62
PNB	132.90	129.18	125.47	132.32	136.03	139.17
POWERGRID	131.30	129.40	127.50	130.95	132.85	134.40
RELIANCE	952.40	941.95	931.50	948.35	958.80	965.20
SBIN	243.00	235.73	228.47	240.27	247.53	252.07
SUNPHARMA	803.40	795.18	786.97	808.77	816.98	830.57
TATAMOTORS	396.15	390.97	385.78	397.68	402.87	409.58
TATAPOWER	67.55	66.27	64.98	67.88	69.17	70.78
TATASTEEL	220.25	216.28	212.32	219.07	223.03	225.82
TCS	2505.75	2486.72	2467.68	2502.48	2521.52	2537.28
TECHM	533.45	527.28	521.12	532.32	538.48	543.52
ULTRACEMCO	2793.35	2697.27	2601.18	2871.08	2967.17	3140.98
VEDL	92.20	90.20	88.20	92.85	94.85	97.50
WIPRO	569.95	566.88	563.82	569.77	572.83	575.72
YESBANK	758.45	747.73	737.02	760.72	771.43	784.42
ZEEL	398.45	391.78	385.12	401.52	408.18	417.92



## CORPORATE ACTION / BOARD MEETINGS

NSE Download Ref.No.:NSE/CML/31078:- Change in Name of the Company from Gulf Oil Corporation Limited to GOCL Corporation Limited. Symbol will change from GULFCORP to GOCLCORP wef November 10, 2015

NSE Download Ref.No.:NSE/SURV/31093:- IDFC Bank Limited- SYMBOL - (IDFCBANK) shall be transferred from trade for trade segment (series: BE) to rolling segment (series: EQ) with effect from November 23, 2015(Monday).

### BOARD MEETINGS

COMPANY NAME	DATE	PURPOSE	RS. PER SH.
MAYURUNIQ	9-Nov-15	DIVIDEND	0.8
SOLARINDS	9-Nov-15	DIVIDEND	9
AARTIIND	9-Nov-15	DIVIDEND	3
MARICO	9-Nov-15	DIVIDEND	1.75
GRANULES	9-Nov-15	DIVIDEND	0.15
ASTRAL	9-Nov-15	DIVIDEND	0.15
GULPOLY	10-Nov-15	DIVIDEND	1.75
AARTIDRUGS	10-Nov-15	DIVIDEND	
ATULAUTO	10-Nov-15	DIVIDEND	2.75
TIDEWATER	10-Nov-15	DIVIDEND	150
SONATSOFTW	10-Nov-15	DIVIDEND	
MRF	10-Nov-15	DIVIDEND	3
LGBBROSLTD	10-Nov-15	DIVIDEND	2.5
MANAKSIA	10-Nov-15	DIVIDEND	
ONGC	10-Nov-15	DIVIDEND	
DCMSHRIRAM	13-Nov-15	DIVIDEND	1.2
SUNDRMFAST	13-Nov-15	DIVIDEND	0.85
PAGEIND	16-Nov-15	DIVIDEND	
CARERATING	16-Nov-15	DIVIDEND	6
MTEDUCARE	16-Nov-15	DIVIDEND	
HEXAWARE	16-Nov-15	DIVIDEND	2.25
GABRIEL	16-Nov-15	DIVIDEND	0.45

## NEWS & RUMOURS:

- Gold (Spot Dollar) major support = \$1068/\$1041 & Resistance = \$1121/\$1166.
- Crude oil range->\$41 to \$51.
- Dollar Surges, Bonds Drop on Rate Speculation; Stocks Fluctuate: -The dollar surged past this year's high and Treasuries tumbled after U.S. jobs grew more than analysts estimated, bolstering speculation the Federal Reserve will raise interest rates next month.
- China's Stock-Market Bulls Are Back, But Where Are the Earnings? : - Hao Hong has seen this movie before, and it didn't end well for China's stock-market bulls. Five months after an equity boom built on weak corporate profits turned into a \$5 trillion crash, a similar scenario is playing out in China today. The benchmark Shanghai Composite Index has surged 20 percent from its Aug. 26 low, despite third-quarter profits that trailed analyst estimates at 68 percent of companies in the index, the eighth straight quarter of disappointing results.
- Dollar rallies to 6-month highs on strong U.S. jobs data: - The dollar rallied to six-month highs against the other major currencies on Friday, after the release of strong U.S. employment data added to expectations for a December rate hike by the Federal Reserve.
- Crude set for weekly loss as supply glut and dollar drag: - Crude oil prices were on track to post weekly losses on Friday as an oversupply of physical oil and a strong dollar bed veiled the market.
- Payrolls in U.S. Climb Most This Year as Jobless Rate Reaches 5%:- Employment in October surged by the most this year, wage growth accelerated and the jobless rate fell to 5 percent, signs of labor-market durability Federal Reserve policy makers are looking for as they consider a year-end boost in borrowing costs.

## TRENDS & OUTLOOK – DATE: 09- Nov- 2015

### PRECIOUS METALS:

COMMDITY (MCX)	S2	S1	PIVOT POINT	R1	R2
GOLD (Dec)	24966	25270	25590	25859	26071
SILVER (Dec)	33100	34000	35100	36300	37777

### BASE METALS

COMMDITY (MCX)	S2	S1	PIVOT POINT	R1	R2
COPPER (Nov)	318	324	330	335	339
ZINC (Nov)	104.20	106.45	109	111.45	113.55
LEAD (Nov)	104.70	107.10	109.50	112.30	114.90
NICKEL (Nov)	612	630	645	666	684

### ENERGY

COMMDITY (MCX)	S2	S1	PIVOT POINT	R1	R2
CRUDE OIL (Nov)	2750	2850	2975	3075	3195
NATURAL GAS (Nov)	144	150	156	160	165

### DATE TALKS : TODAY'S ECONOMIC DATA :

Eurogroup Meetings, Labor Market Conditions Index.





Registered Office

Indira House, 3rd Floor, 5 Topiwala Lane,  
Opp. Lemington Road Police Station, Grant Road (East), Mumbai - 400007.

Corporate Office

'Ramavat House' E-15, Saket Nagar, Indore - 452018 (M.P.)

Customer Care

Tel: +91-731-4097170/ 71/ 72/ 73/ 74 M. +91 93031 72345

Email: [customercare@indiratrade.com](mailto:customercare@indiratrade.com) [www.indiratrade.com](http://www.indiratrade.com)



INSTITUTIONAL DEALING UNIT

Africa House, 5, Topiwalla Lane, Lamington Road, Mumbai, 400007

Tel: +91 22 30080678 Fax : +91 22 23870767 Email : [ie@indiratrade.com](mailto:ie@indiratrade.com)

**Disclaimer**

This report is for private circulation within the Indira Group. This report is strictly confidential and for information of the selected recipient only and may not be altered in any way, transmitted to, copied or distributed, in part or in whole, to any other person or to the media or reproduced in any form. This report should not be construed as an offer or solicitation to buy or sell any securities or any interest in securities. It does not constitute a personal recommendation or take into account the particular investment objectives, financial situations, or any such factor. The information, opinions estimates and forecasts contained here have been obtained from, or are based upon, sources we believe to be reliable, but no representation of warranty, express or implied, is made by us to their accuracy or completeness. Opinions expressed are our current opinions as of the date appearing on this material only and are subject to change without notice.